

*Affirming each
woman in her
relationship with
the Lord and
enabling her to be in
ministry to the people
of the world.*

IN THIS ISSUE:

| | |
|-----------------------------|-------|
| Mission Grants & Trip .. | 1-3 |
| President's Message | 4 |
| Leadership Development . | 5 |
| Christian Life | 6 |
| Counselor, Volunteers | 7 |
| Mobile Convention | 8-9 |
| Julia Baker | 10 |
| YW/YWR Retreat | 11 |
| Zones, Missions | 12-14 |
| Officer Information | 15 |
| Calendar Items..... | Back |

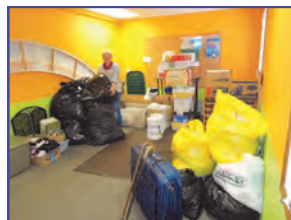
Volunteers Make a Difference



MISSION GRANTS
DIRECTOR
LYNNE JOHNSON
ALMOND, WI

What a blessing the volunteers are who work at the many collection centers for Orphan Grain Train throughout the North Wisconsin District. I visited the collection center at Beautiful Savior Lutheran Church, Plover, and received a tour and spoke with many of the faithful volunteers. The morning started with prayer and the announcement that since the fall of 2014 when the packing center began, through November of this year the volunteers had packed 9,405 boxes.

As the tour started, I was shown the intake room where people can drop off donations throughout the week. In the main work area there where more than ten people sorting and folding clothing and separating household items. More



people were putting the items in various boxes that



will be shipped to many countries.

I learned that some people who are unable to come to the center help out by washing soiled clothes, mending and repairing items like zippers. Volunteers from the church help by making pillow case dresses, quilts, hygiene kits, layettes, and crocheting bag mats.

I asked a few of the volunteers why they come. They told me they like the opportunity to do something for people in need. It is our hope that the missionary leaders will have the opportunity to share the love of Jesus with the people who receive the items we have packed. A few of the volunteers said we do not belong to this church, but it is such a blessing spending time with such friendly people. We share stories about our families and our life when we work. These three hours each week pass quickly.

(Continued on page 7)

2018-2020

North Wisconsin District LWML Mission Grants Goal \$107,000

PAID

1. Orphan Grain Train - Wisconsin Branch
\$15,000
2. Concordia Theological Seminary, Fort Wayne
Food Coop
\$10,000
3. District Professional Church Workers Financial Aid
\$25,000
4. Ashland Cares, Inc. - Homeless Shelter
\$12,000
5. LCMS Mission Central - Current Need
\$10,000
6. Mission of Hope, Gwinn, Michigan
\$20,000
7. Operation Barnabas for Comfort Dog Congregations
\$2,500
8. "Wonderfully Made" - Resources for People of All
Abilities - Bethesda
\$7,000
9. Derricks Family, Missionary Support in Cameroon,
Africa, with Lutheran Bible Translators
\$5,500



2019 LWML Mission Trip to Bethesda in Watertown and Trinity Lutheran Church in Milwaukee



Are You Interested? August 1-3, 2019

Go by bus or car?

Travel will be determined on how many are interested.

Lodging: 2 nights approximately \$79 per night plus tax. The cost of the room will be divided by the number of people in the room.

Mission work:

Two sessions with Bethesda friends doing Bible study, music, crafts, skit/puppets

Travel to Trinity Lutheran Church in Milwaukee to help clean and paint after their fire in May of 2018 and any other mission work they may have for us.

Work to do before we leave:

- Make prayer cloths and wooden beaded necklaces for residence of Bethesda.
- Make cards, gift baskets, candy/cookies for staff at Bethesda.
- We will have a Servant Activity at Trinity Lutheran Church in Athens on Monday, March 4 from 9:00 until noon. Please contact Mary Scharenbrock if you are interested in helping with the servant activity at 715-826-0160. **All are welcome to attend!**

Please return registration form by May 1, 2019. Please mail to Mary Scharenbrock, W3516 Walrath Road, Glen Flora, WI 54526 or call Mary at (715) 826-0160.

Name _____

Address _____

Email _____

Phone Number _____

Possible Pick-up location (city) _____

Do you need a roommate? _____

With how many people would you be willing to share a room? _____

Welcome 2019!



NWI DISTRICT PRESIDENT
BECKY HALTAUFDERHEID
ALGOMA, WI

Last year is now in the memory books. We surpassed our Mission Grant Goal by \$7,000 – amazing how God is at work in each of you with your mite offerings! The North WI District LWML celebrated its 75th Anniversary at the district convention. So much fun to look back and see how far our

district LWML has come. From the very first mission grant goal of \$1,000 to today's mission grant goal of \$107,000. We thank God for His many blessings throughout the years.

In November, four of us traveled to St. Louis for the National Assembly Of Leaders (AOL) training under the theme, "Follow the Leader." We had two full days of intense training, planning, and collaborating. We submitted a plan on how we are going to disseminate the materials and information on allowing us all to follow our leader, Jesus Christ, to you. There will be five scheduled presentations with multiple zones invited to each presentation. (See page 5 for the schedule). We are excited to bring this leadership information to you and pray that you will set aside time to join your sisters in Christ as we follow Jesus and lead others to Him through the LWML.

This year, we will have many opportunities to follow Jesus. On January 19 the Christian Life chairs and assistants will gather to learn the Christian Growth topics to be presented at this year's rallies. Our Pastoral Counselors, Rev. Jonathon Wessel and Rev. Doug Reinders, wrote these topics and will present them. There will be the spring and fall zone rallies, the Young Women's Retreat on April 6, the Fall Retreat in September and the various AOL workshops. What a great way to be blessed by God's Word at each of these events.

In June we will be traveling to Mobile for the 38th Biennial Convention, under the theme, "In

Praise to the Lord." You will be able to sing and rejoice in celebration of His Word, tell everyone of His salvation, declare His glory among all the nations, and leave from there refreshed and filled with His joy! What a beautiful way to praise the Lord. There are many ways for you to rejoice in Mobile with other sisters around the nation. If you love to sing in the choir, join the convention choir. Perhaps you like to do mission activities, you can join other sisters at the servant events, or walk with your brothers and sisters in the mission pledge walk. You will be blessed in so many ways, and you will be a blessing to others at the same time. By the time of this message, we should have a bus going to Mobile. If you are not registered for the bus and would like to join, please contact Sue Neider. Her information is on page 15 of this edition.

How was your walk with Jesus last year? My walk starts every day with devotions from the LWML, LHM, Lutheran Church Charities and Time of Grace. I give myself those 15 quiet minutes in the morning as I sip on my first cup of coffee and reflect on God's Word. This way, I am ready to meet the challenges of the day. Then, I read through the Bible as I ride my exercise bike. I've been doing that over the last 18 months and am now in Roman 8. I feel so refreshed as I read His Word. If I don't, I feel a longing that won't go away until I've read His Word. This passage, "*Your Word is a lamp for my feet and a light for my path*" from Psalm 119:105, reminds me that God lights my way each day. His Word is certainly constant and true. I pray God's Word is your lamp lighting your way each day. May you be blessed this new year.

Blessed to serve you.

Becky Haltaufderheid





Leadership Development

As Women in Mission who seek to follow the Leader, our Lord and Savior Jesus, we serve with joy and thankfulness to our Lord, praying and knowing that God will hear us and work through us.

"Let your light shine before others, so that they may see your good works and give glory to your Father who is in heaven" (Matthew 5:16).

When we think of Leader Development we think of Christ being our leader as we spend time in prayer, by reading His Word and by partaking in His sacraments. Christ is our leader. Just as Jesus led the Israelites to the promised land He leads us in our work through our Lutheran Women's Missionary League reaching out to those who may be homeless, blind, hungry or in prison. Whether it be to those He brings into our daily lives each day or through our mites and missions. Thank you for being Jesus' light to those who may not know Him. Jesus said *"I am the light of the world. Whoever follows me will not walk in darkness, but will have the light of life."* (John 8:12). May your light shine bright as Jesus leads you in all that you do for Him and others.



Serving Him with you,
Leader Development

*Deb Grothman
Mary Scharenbrock*



The LWML Assembly of Leaders (AOL) training was held November 7-10, 2018, in St. Louis. Junior Pastoral Counselor Reinders, Lisa Glessing Sue Neider and myself were blessed to attend. As part of this training we submitted a plan to share this material with our district, zones and local societies to help all of us grow in our leadership skills to help us serve our Lord. We feel that the plan we have submitted will be the best way to include as many LWML members and future leaders as possible without causing a lot of traveling for you, the participant. Please feel free to attend another session if you are unable to attend the workshop scheduled in your area.

The 2019 workshop schedule will be as follows:

February 19 - All Board of Directors and Zone Presidents (the Board meeting will be shortened to facilitate this workshop).

March 2 - Zones 12, 13/14, 18 & 19.

May 4 - Zones 1, 3 & 4

September 21 - Zones 2, 5 & 7

October 12 - Zones 8, 9 & 15

November 2 - Zones 6, 10, 11, 16 & 17

The time and location of the workshops at the zone level will be announced in the near future. We ask that zones refrain from scheduling zone activities on the above dates. We are excited and look forward to sharing this information with you!

Becky Haltaufderheid

The Lord's Prayer



CHRISTIAN LIFE
SHARON MAKELA
TREGO, WI

I recently did a devotion at a nursing home and was impressed that a gentleman in his 90s could recite the Lord's Prayer from memory. How wonderful for that gentleman that he has the prayer that the Lord taught us always with him.

The passage in the Bible that gives us this prayer is Luke 11:1-4: *"One day Jesus was praying in a certain place.*

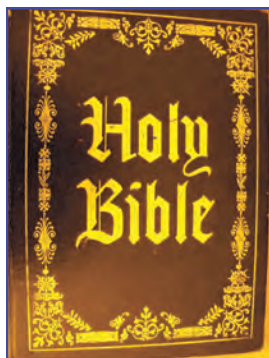
When he finished, one of his disciples said to him, 'Lord, teach us to pray, just as John taught his disciples.' He said to them, 'When you pray, say:' And then Jesus said the words that we have come to know as the Lord's Prayer. No one can doubt the prayer's importance, since it was first given to the Church by the Lord Himself. In fact, it is usually the prayer that most everyone memorizes after the mealtime and bedtime prayers as young children.

While it is certainly acceptable to pray the prayer from memory, especially when we think carefully about what we are saying, it does not seem that Jesus gave us this prayer as words to recite from memory. Instead, the intent that our Savior seems to have had was to give us a model to use when we pray. That was the focus at our Christian Life Workshop a couple of years ago when it was suggested using the Lord's Prayer as a guide for our own prayers.

First comes: **"Our Father who art in heaven, hallowed be Thy name."** This is the call to praise and worship. Take time to honor the Lord and consider his greatness.

Then **"Thy kingdom come, Thy will be done on earth as it is in heaven."** Align yourself with God's will; proclaim God's will over your life. Then we can go on to ask God for our needs.

We then ask God to: **"Give us this day our daily bread;"** This line has a double meaning behind it. It



asks for God to provide us with the daily necessities that we need (food for the body), but it also refers to God feeding us daily through His Word (food for the soul).

Next we ask God: **"and forgive us our trespasses, as we forgive those who trespass against us."** Even though

as Christians we know we are forgiven of our sins, it is good to pray for forgiveness for it reminds us that we constantly fall short of God's perfect standards. We also are reminded by this line that we are to forgive

others. We have been forgiven so much by God, we are to show Christ-like character and forgive those who wrong us.

Next we pray: **"And lead us not into temptation; but deliver us from evil."** Despite us having been saved by Jesus and the victory over sin and death having been won, there is still evil in this world. So, we ask God to help us stand firm in the face of temptation and resist the schemes of the devil. We are praying that God will keep us from being tempted to sin by acting unloving and unkind to those around us.

Then we end with: **"For Thine is the kingdom and the power and the glory forever and ever. Amen."** Finish with praising God for the power and glory that He has and will have for all eternity. Take time to thank Him for the answers to come and to worship Him.

The Lord's Prayer provides everyone with a model for praying that will help us in every generation. The Lord's Prayer was a model for our great-great-grandparents, our great-grandparents, our grandparents and our parents. It will continue to be a model for our children, grandchildren, great-grandchildren--every generation. Be sure to teach it to the next generation.

Pray, praise and give thanks!

Sharon Makela



Beloved Sisters in Christ



SR. PASTORAL
COUNSELOR
REV. JONATHAN WESSEL
AUGUSTA, WI

Many of you may be very excited for the beginning of the new year. I too look forward to this time – a time for a *fresh* start. You and I don't want to make the mistakes of the past. A brand-new calendar with empty pages, full of endless opportunities awaits!

If you are like most, you have already begun filling up the days on your "new"

calendar with appointments, school and other special events. The worry surrounding how these events will play out may already begin, despite a renewed sense of "trying to do better."

It's the same every year, isn't it?

We don't have to await the beginning of a new year to experience new beginnings.

"The steadfast love of the LORD never ceases; his mercies never come to an end; they are new every morning; great is your faithfulness" (Lamentations 3:22-23).

Every morning God gives us His mercy,

which is His steadfast love. While others on earth may take away their love for you for whatever reason, God's steadfast love is always there. How do we know that love? When we look at Jesus, the baby of Bethlehem, we see His words and deeds and know that love. He became "Immanuel – God with us." He came to obey the Law, not destroy it. He came to make the perfect sacrifice of blood for the sins of the whole world. He rose from the dead to defeat death once and for all. He promised to take us to be with Him in that glorious new Jerusalem. He reminds us of His eternal presence in the hearing of His Word and in the bread and wine of the Lord's Supper, His body and blood given for us.

Every day of our lives we see the love of God play out in new and different ways. Every day of our lives we see ways to share that love with those who are still in the darkness of their sins. May the Holy Spirit help us to see and live that love each and every day. May we give thanks to God for all of His blessings in this New Year.

In the service of Christ, I remain,

Pastor Wessel

Volunteers Make a Difference (continued from page 1)



Next I had the opportunity to meet Chuck who picks up the packed boxes in his trailer and transports them to the Wisconsin home office in Westfield. Today he loaded 229 boxes, some medical equipment and items that can't

be packed in boxes.

These boxes along with boxes from other packing centers in Wisconsin are collected in Westfield and prepped for shipping. This year the Wisconsin Branch shipped 42 loads that included 17 loads to missions in Texas, the Appalachian Mountain area and to Native American reservations in the United States.

Each load costs \$4,000 to \$19,000 (on an average each box costs \$11 to ship.) Our grant to Orphan Grain Train Wisconsin Branch has helped with some of these shipping costs.



Deuteronomy 15:11: *"There will always be poor people in the land. Therefore I command you to be openhanded toward your brothers and toward the poor and needy in your land."*

The wonderful Orphan Grain Train volunteers are a blessing as they serve the Lord with joy.

In His Mission,

Lynne Johnson



Lutheran Women's Missionary League

38th Biennial Convention • June 20–23, 2019

Mobile, Alabama

*Sing to the Lord, all the earth! Tell of his salvation from day to day.
Declare his glory among the nations (1 Chronicles 16:23–24a).*

Are you making plans to travel to Mobile this summer for the 38th Biennial Convention? The last time the LWML gathered in Mobile for convention was in 1973. The planning committee has done a fantastic job with all the preparations made for us to join together "In Praise to the Lord."

You will be able to hear from six speakers how our mite offerings have impacted each of the ministries. There are twelve noon luncheons on Friday and eleven special interest luncheons to choose from on Saturday. How blessed we will be listening to all of these speakers.

Donna Pyle will serve as our Bible Study Leader. Many of you may remember her presentations within our district. Our own Jan Struck will again serve as the humorous interrupter. I wonder who she will be in Mobile?

Joe Castillo, from Atlanta, has a talent of telling stories with his hands in sand. As he creates scenes, they are displayed on a screen for the audience. His music and unique content will stimulate the mind, capture your eyes and grip your heart. This is just a taste of what you can experience in Mobile. There is much more convention information included in the winter edition of the Lutheran Woman's Quarterly on the Mission in Motion pledge walk Saturday morning, housing, registration fees, and forms.

Tee Up 4 Mites Charity Golf Outing is scheduled for Wednesday, June 19, before the convention at the Magnolia Grove-Crossings Golf Course at Mobile. There are tours scheduled in and around Mobile, half-day and

a pontoon boat tour of the Port of Mobile on Wednesday and Thursday pre-convention and Monday post-convention. There are several full day tours scheduled on Thursday pre-convention and Monday post-convention, and of course the greatest tour, the post-convention cruise out of Mobile. I was told The Mobile Cruise Terminal is about 4 blocks from the Convention Center.

Check out all this information at www.lwml.org/2019-convention.

Our District is sending 18 delegates, 2 Young Women Reps, 1 Heart to Heart Sister for training, our Junior Pastoral Counselor, Pastor Reinders, and myself.

District Meeting Manager, Sue Neider provided information regarding traveling by bus to Mobile. I know that she needed 35 people by December 15, 2018, in order to secure a bus. Plans have been made to stop at the new LWML office in St. Louis, the Rosa Young Museum in Selma, Alabama, and the Ark and Creation Museum on the way back. For more information, please contact Sue Neider. Her information is located on page 15 of this issue. I hope to see you in Mobile!



Becky Haltaufderheid



Gifts from the Heart



Please check the LWML website for more information about these gifts. Bring any of the following:

- ✚ **Gift cards** (Walmart, or Target in \$10 or \$25 amounts)
- ✚ **Quilts (60" x 80")**
- ✚ **Twin-sized sheet sets** (new and in package)
- ✚ **Arch Books** order from Concordia Publishing House (CPH) and they will deliver to GFTH.
- ✚ **ESV Economy Style Bible**, soft cover Bible or purchase online at: www.lwml.org/donate-online. These Bibles will be given to NOLA-4H: Hearts for the Hungry, Homeless, and Hurting.
- ✚ **Health Kits** - Please bring a complete kit wrapped in a bath towel
- ✚ Items to be included are: **washcloth, bath towel, full-sized bar of soap, toothbrush & toothpaste, women's stick deodorant, comb/brush, and Mustard Seeds, devotional book or tract.**
- ✚ **New Baby Kits** - Please bring a complete kit packed in a diaper bag or wrapped in a blanket or quilt. Label baby size on kit. **Items to be included in the diaper bag, fleece blanket or baby quilt are: baby wipes, hooded towel or washcloth, 1-2 sleepers (newborn-24 months), 1-2 outfits (newborn - 24 months), 8-12 disposable diapers (newborn - 24 months), 2-3 burp pads, 2-3 pair of socks, baby toy or LWML bear, and Love, Laughter, and Lullabies Mustard Seeds at CPH.**

Recipients of these gifts include Lutheran World Relief, Women's Resource Center, The Penelope House, Home of Grace for Women, and NOLA 4H: Hearts for the Hungry, Homeless, and Hurting.

Servant Events

Thursday, June 20, 2019

9:00 AM - 3:00 PM

Women, men and children 14 years and over are encouraged to join "Servant Connections."

The following on-site Servant Activities are planned: **Braille books and calendars, Communication Station cards of encouragement for cancer patients who receive care packages from Phil's Friends, Bookmarks for Lutheran Hour Ministries outreach to worldwide missions, Fleece Blankets, Tying Quilts, Assembling Personal Care Kits and School Kits.** Many of these items will help fill a truck provided by Lutheran World Relief.

Reach out with your heart and hands to the needy in Mobile and other areas as you spend time as a willing servant! There is a \$5 fee to participate in these activities. Please check the winter edition of the Lutheran Quarterly or the LWML website at www.lwml.org/2019-convention for more information on how to be involved.



The Adventure of a Lifetime

Julia Baker
British Literature
September 11, 2018

Opening my window, I breathed in the clean air. Fresh air did not come as a surprise out of the city, but even I, who had lived in Mongolia for five years, did not expect the space I found. No one can quite describe the feeling of sitting in a car for days and just staring at hills and plains as far as the eye can see, on and on. Sometimes, we would pass a “village,” mostly just a gas station, sometimes an outhouse, and a few scattered cabins. Chinggis Khan came to mind, riding on horse-back with his warriors through these same plains centuries ago, and I wondered what motivated him to cross all that just to conquer more. Traveling from Ulaabataar, the capital, to Hovd, in western Mongolia, took three days. I did not know it at the time, but in driving across Mongolia with my parents and three siblings I not only saw much of Mongolia, but made new friends, and grew a lot in faith.

Finally, my dad drove the car around the curve of a mountain, and the town of Hovd came into view. Three days before, when we left the city, the town would have seemed tiny; but after seeing just hills and tents for three days straight, it seemed huge. My siblings cheered, looking at that small city in the light of the setting sun. We followed some friends down another dirt road to the best hotel in town for the youth camp we had prepared to lead. Our friends had not lied when they called it “the best hotel in town.” However, even as the best, it had no mattresses on the beds, practically no electricity, and a reeking outhouse at the back.

Half-way through the first day, I found out three Muslim girls had come by mistake. We started a drama workshop my mom had prepared, breaking into different teams. Concerned, I discovered one of the Muslim girls in my group. My mom had instructed me and the other group leaders to do a Christian play, and, after thinking hard, praying, and asking my dad’s opinion, I suggested we act the story of

the good Samaritan, finishing with 1 John, 4:19. After an hour of practicing the plays, my dad preached, focusing on Jesus and what he has done for us. I noticed the Muslim girl from my group, Cimbat, listening, and I prayed that she would believe.

Later, Cimbat surprised me by requesting songs during devotions. When the camp ended, I hugged Cimbat goodbye, and we drove back into town. We visited one of the church members the last evening before we left, and there, I found out something wonderful. Cimbat had told this lady she wanted to go to church. I could not contain my joy. God had started changing someone’s life, and used me in a little part of that.

When we left Ulaanbataar, someone called our journey the trip of a lifetime. At first, some might think the miles of desert, hills, and plains full of sheep the most amazing part of the trip. But to me, the trip meant much, much more. Thinking of the six days of traveling to and from the city, I would prefer to take an airplane if we went again, because the traveling part did not matter too much to me. I care a whole lot more about the “lifetime” part of that saying; the plans for my life God has, and the lives of all those who still do not know Him. So many do not yet know Jesus and what he has done for them; not just Cimbat, but millions of others as well: the women at the gas station, the man laying drunk on the street, the children who my siblings play with outside. Over this summer, it has become so much clearer that as my first priority, wherever I go in life, I must shine God’s light to those in darkness.

This essay was written by my granddaughter, Julia Baker, age 15, the eldest daughter of LCMS Missionaries Dave & Rachel Baker, who serve in Mongolia among the Kazakh people, who are, for the most part, Muslim. I found it delightful, and a wonderful illustration of how all of us can be missionaries in whatever situation we are, as the Lord provides opportunity. The account of her trip really touched my heart, and I think it might touch others as well. She gave her permission to send it to you.

*Shalom,
Bob Selle*

Join the fun at the
2019 North Wisconsin District LWML
Young Women's & "Young At Heart" Retreat:
**Wandering in the Wilderness:
Waiting on God's Timing!**
at Camp Luther, Three Lakes, WI

Saturday, April 6, 2016

Registration begins: 9:00 am

Retreat: 10:00 am-3:00 pm

Do you have lots going on in your life? Are you in need of a "RECHARGE"? Enjoy a day of fellowship & fun, and have a chance to re-energize with friends old and new! Our speaker this year will be Pastor Martin Koeller. Pastor Koeller will help us think contemplate God's timing and His plan for our lives. **Bring a friend—all ladies are welcome!**

Back again this year! **An optional overnight at Camp Luther on Friday, April 5, 2018!** Retreat Center lodging will be available for \$36.00/person. Fellowship, snacks & fun will begin at 7:00 pm on Friday!

For more information, please contact Lisa Glessing at 715-520-7273 or glessinglm@gmail.com or Denise Fall at 715-206-0825 or dfall16@gmail.com.

_____ Retreat Registration (includes programming and Saturday lunch)-\$30 per person

_____ Retreat Center Lodging on Friday, April 5, 2019-\$36.00 per person

Roommates (up to 4 people per room): _____

_____ Breakfast on Saturday before retreat begins- \$10 per person

Total Enclosed: _____ *Please write checks out to: NWD LWML*

Name: _____ Phone: _____

E-Mail: _____

*E-Mail will be used for pre-retreat communication!

Address: _____

Home Church: _____

Please return to: Lisa Glessing, W6915 Pair O' Lakes Rd, Trego, WI 54888 by March 13, 2019!

***In the case of cancellation, funds will remain with the
North Wisconsin District LWML to offset program costs.**

Mission of the Month

MARY ANN BIENO, PROJECT CHAIR
ST. PAUL LUTHERAN CHURCH
STEVENS POINT, WI
ZONE 17



The October LWML mission for the month at St. Paul Lutheran Church in Stevens Point was to collect men's, women's and children's socks for the Wisconsin Veteran's Home at King in Waupaca and the Stevens Point Salvation Army. The mission was publicized every week during October reminding the congregation to purchase a pair of extra socks while shopping for their own socks. After all, it is fall and everyone needs socks to keep their feet warm. The congregation responded and a total of 200 pairs were collected and delivered. Thanks and God's blessings to each of you.



National Mite Offerings Received as of November 30, 2018

Mission Goal for 2017–2019 Biennium: \$2,075,000.00

Amount Received: \$ 1,547,807.85

Total Mites Still Needed: \$ 527,192.15

Fall Rally

MARY SCHARENBRICK
TRINITY EVANGELICAL LUTHERAN CHURCH
GLEN FLORA, WI
ZONE 4

The North Wisconsin District LWML Zone 4 rally was held at Zion Lutheran Church Gilman on Saturday, October 20. President Sue Pfeil called our rally to order and Jane DeStaerky welcomed all who attended. The opening devotion was given by Pastor Dean Herberts and closing devotion by Pastor John Trewyn, Sr.



Lois Lodholz and Rita Jeske, Christian Life Co-Chairs, led our Bible study on "Overwhelmed, a Study of Holy Baptism" written by Deaconess Frances Szeto. Paula Hook from St. John's Lutheran Church was elected to be our Zone 4 delegate to convention in Mobile and Rita Jeske as our alternate.

Rev. Bill Metter from Wausau was the speaker for the day and he spoke on religion and how it is changing. Pastor Metter shared a DVD and clips from the media and untruths being spoken about Jesus.



Peace Lutheran Church in Park Falls did a skit called, "God's Powerful Word," and they invited us to their spring rally. Sisters in Christ from Zion, Gilman, chose Abiding Care Pregnancy Resource



Center to be recipients of Gifts From the Heart. Items that were donated went to help support the center, women, babies, and families.

"You Shall Be My Witnesses"



Isn't it amazing that God finds us worthy of sharing the Good News?

- Have you ever felt a yearning to share Jesus with people outside of your circle of friends?
- Have you ever wondered about the work of LCMS's Recognized Service Organizations?
- Have you ever thought you'd like to do a short-term mission?
- Do you have an idea for a LWML mission trip?
- Would you like to lead one?

Please contact us with your ideas.

Lynne Johnson: lafa@uniontel.net

Penny Selle: selle@athenet.net

Blessed to be a Blessing

CAREN ERICKSON, PRESIDENT
OUR REDEEMER LADIES GUILD
OUR REDEEMER LUTHERAN CHURCH
KINGSFORD, MI
ZONE 2

Seventy-six gently used purses were filled with necessities and treats as the service project at the Zone 2 Fall Rally hosted by our Redeemer, Kingsford, Mich., on September 29. Ladies followed the assembly line to fill purses for the Caring House for Abused Women, Pregnancy Crisis Center and other areas of need. The project was titled, "Blessed to be a Blessing." Dee Mattson, Zone 2 President, led the ladies in filling purses.

Opening and closing devotions were led by our new minister, Rev. Matt Ruesch, following the baptism theme to tie in with the Bible study, "Overwhelmed, Study of Baptism," by Zone 2 Christian Life Chair Allison Hein. Solo by Mrs. Heather Ruesch. There was an impressive baptism display at the altar with shells, etc.

Mission speaker, Christel Nevendorf, LCMS missionary to Latin America-Caribbean Region gave a very interesting presentation. Christel also gave a talk after church on LWML Sunday, September 30.

A fall theme decorated the fellowship hall. A good time was had by all.

In case others may be interested in this project, the information poster follows:

"Blessed to be a Blessing"

We will be filling women's purses with wants and needs. Purses will be donated to Caring House for victims of domestic and sexual violence. If you are a woman, just put yourself in these women's shoes being without your purse and imagine how you would feel without the necessities you carry every day.



NEEDS: gently used purses, billfolds/wallets, scarves, note pads, pens, keychains, jewelry, jewelry bags, feminine products, tissue packs, travel size shampoo and lotions, body wash, nail polish, emery boards, band aids, gum, inspirational reading material, hand sanitizer and any other things you think they might want or need. We will also be in need of some \$1 bills. We will be money folding and putting them also with the purses.

The project will be part of the Zone 2 rally to be held at Our Redeemer Lutheran, September 29. All ladies are encouraged to attend and we will welcome any contributions you may have to donate. Gifts can be placed in the basket in the narthex. Thanks to all for our willingness to join with us to help women in need of special blessings.

Any questions? Contact Caren at 774-0182 or any LWML members.

Serving the Lord With Gladness

Executive Committee (Elected Officers)

| | | | |
|----------------------------------|------------------------|--------------|---------------------------------|
| District President | Rebecca Haltaufderheid | 920-255-0280 | becky.halttaufderheid@gmail.com |
| Mission Grants Director | Lynne Johnson | 715-366-4642 | lafa@uniontel.net |
| Recording Secretary | Sherrilee Wallerman | 715-344-0031 | swallerman@charter.net |
| 1st Vice President | Diane Simon | 920-720-8771 | disimon33@yahoo.com |
| 2nd Vice President | Sharon Hanke | 715-842-1986 | srhanke60@gmail.com |
| Corresponding Secretary | Georgette Vandenburg | 715-476-2110 | mrsvan1941@yahoo.com |
| Financial Secretary | Pam Pfankuch | 715-723-7124 | ppfankuch53@gmail.com |
| Treasurer | Jody Cook | 715-325-5595 | djcook@wctc.net |
| Junior Pastoral Counselor | Rev. Douglas Reinders | 920-667-4301 | pastordoug@milwpc.com |
| Senior Pastoral Counselor | Pastor Jonathan Wessel | 715-533-9662 | gracerev@plbb.us |

Executive Board (Appointed Officers)

| | | | |
|----------------------------------------|--------------------------------------------------------------------------|--------------------------------------------------------------|---------------------------------------------------------------------------------------------|
| Archivist/Historian | Cindy Braatz | 715-842-7320 | cindy.braatz@agcountry.com |
| Christian Life Chair Assistants | Dawn Via Sue Pfeil Sharon Makela | 715-641-2072 715-266-2187 715-635-9263 | dbscorpio76@gmail.com mumzie1950@yahoo.com sharonmakela@yahoo.com |
| Heart to Heart Chair Assistants | Sarah Long-Radloff Jeanne Wilman Sue Grotjahn Nicole Sengkhamee | 920-734-5289 715-790-1369 715-896-2730 920-600-1060 | lsradloff@milwpc.com jjwilman@amerytel.net psydkick2@gmail.com yognicole@gmail.com |
| Human Care Chairman Assistants | Sandy Michaelis Deb Trewyn Terri Fink | 715-355-6849 715-820-3443 715-457-2903 | sandikay3@frontier.com dtrewyn@msn.com Terri61243@gmail.com |
| Leader Development Co-chairs | Deb Grothman Mary Scharenbrock | 920-621-8168 715-826-0160 | deb.grothman@att.net maryscharenbrock@gmail.com |
| Meeting Manager | Sue Neider | 715-889-6992 | hsneider1971@gmail.com |
| Mission Tidings | Betsy Lane, Editor Teresa Pockat, Circulation Mgr. | 715-882-3274 715-851-2323 | vlane@antigopro.net revwifet@yahoo.com |
| Parliamentarian | Yvonne Schilsky | 715-573-0123 | yvondschil@frontier.com |
| Public Relations Director | Sharon Niemann | 715-352-2087 | elsharon3515@gmail.com |
| Structure Chairman Assistant | Jackie Strassburg Allison Hein | 715-551-8613 906-337-1487 | j_strassburg@hotmail.com amhein@mtu.edu |
| Web Administrator | Karol Selle | 715-303-9259 | selleks@gmail.com |
| YWR Co-Chairs Assistant | Lisa Glessing Denise Fall Shannon Schwartz | 715-520-7273 715-206-0825 920-312-6584 | glessinglm@gmail.com dfall16@gmail.com shannonschwartznurse@gmail.com |
| Short Term Mission Co-Chairs | Lynne Johnson Penny Selle | 715-366-4642 920-987-5454 | lafa@uniontel.net selle@athenet.net |

PERIODICAL
USPS 362-230

Mission Tidings
North Wisconsin District LWML
Teresa Pockat, Circulation Manager
112 E. Freeborn St.
Cecil, WI 54111

Lutheran Women in Mission

Calendar Items

January 19, 2019

Christian Life Workshop
Wausau

February 18-19, 2019

EC and BOD mtgs.
St. Mark's Church
Wausau

March 1, 2019

Deadline for spring issue of
Mission Tidings

April 6, 2019

YWR Retreat at Camp Luther
Three Lakes

May 20-21, 2019

EC and BOD mtgs.
Rib Mountain Church
Wausau

June 20-23, 2019

LWML 38th Biennial Convention
Mobile, Alabama
Theme: "In Praise to the Lord"



Check Us Out



NOTE: When corresponding via email, please remember to include "LWML" in the subject line along with a brief indication of the subject.

NOTE:

- *Lutheran Woman's Quarterly* subscription information (no money) is sent to the **District Corresponding Secretary**.
- North Wis. District *Mission Tidings* subscription information (no money) is sent to the **District Circulation Manager**.
- Remittance Forms and **ALL MONIES** are sent to the **District Financial Secretary**, checks must be made out to **NWI District - LWML** and clearly marked as to purpose. When sending any correspondence or money, **PLEASE** include **Society Name**, **Church Name**, and **Zone Number**. (Names of district officers are found on page 15.)