



Mission Tidings

Fall 2018
Volume 60, Issue 4
October 1, 2018

Lutheran Women's
Missionary League of
the North Wisconsin
District - LCMS

*Affirming each
woman in her
relationship with
the Lord and
enabling her to be in
ministry to the people
of the world.*

IN THIS ISSUE:

Mission Grants	1-3
President's Message	4-5
Q4T	5
Christian Life, Detroit,	6
Counselor, Zone 5 Rally..	7
Mobile Convention.....	8
Convention Bus Sign Up .	9
NWD Fall Retreat	10-11
NWD Zone Photos ...	12-13
OGT Zone Projects	14
Officer Information.....	15
Calendar Items	Back

First Grant to be Funded!

How blessed the NWD is to have such a faithful group of women and men who serve the Lord in so many ways in the LWML!

At our recent board meeting, it was voted to FULLY fund our first grant for the new biennium of 2018-2020! A check for **\$15,000** will be personally presented to the **Orphan Grain Train-Wisconsin Branch**. Praise the Lord! Orphan Grain Train will be thrilled and so many people will be blessed as many love-filled boxes are shipped for disaster relief! God is **mite**-ily at work in our district. How privileged we are to be used by Him.

At the NWD LWML Fall Retreat at Camp Luther, I announced that my husband, Pastor Martin Koeller, is retiring next June after 40 years of ministry! We will be moving closer to 2 children and soon to be 5 grandchildren in Missouri. We already have a house there, and are downsizing here and getting our house in Appleton ready for selling. I have handed the Mission Grants Director baton off to a very capable, experienced woman, Lynne Johnson. She was approved by the board at our



recent meeting. She has graciously accepted this position to finish my term as we begin this next biennium. Thank you and God bless you, Lynne!

And thank YOU, my precious sisters and brothers in Christ who serve the LWML in the NWD! You have been an inspiration and joy to me as we served the Lord with gladness over the years together. I am grateful to all of you! My prayers will continue for my dear NWD LWML sisters, zones, and societies as you spread God's Word wherever and whenever He has need of you. You will always be special to me. *"May the Lord watch between you and me when we are absent from one another."* Genesis 31:49. *Linda Koeller*



MISSION GRANTS
DIRECTOR
LINDA KOELLER
COMBINED LOCKS, WI

NEW MISSION GRANTS
DIRECTOR
LYNNE JOHNSON
ALMOND, WI

Mission Tidings (USPS 362-230) is published quarterly by the North Wisconsin District Lutheran Women's Missionary League, an auxiliary of the North Wisconsin District Lutheran Church-Missouri Synod. Known office of publication: Mission Tidings, Betsy Lane, Editor, Box 95, White Lake, WI 54491. Cost of Mission Tidings is covered by Mite Box contributions.

Periodical postage paid at Shawano, WI 54166 and additional mailing offices.

POSTMASTER: Send address changes to: Mission Tidings, Teresa Pockat, 112 E. Freeborn St., Cecil, WI 54111.

2018-2020

North Wisconsin District LWML Mission Grants Goal \$107,000

PAID

1. Orphan Grain Train - Wisconsin Branch
\$15,000
2. Concordia Theological Seminary, Fort Wayne
Food Coop
\$10,000
3. District Professional Church Workers Financial Aid
\$25,000
4. Ashland Cares, Inc. - Homeless Shelter
\$12,000
5. LCMS Mission Central - Current Need
\$10,000
6. Mission of Hope, Gwinn, Michigan
\$20,000
7. Operation Barnabas for Comfort Dog Congregations
\$2,500
8. "Wonderfully Made" - Resources for People of All
Abilities - Bethesda
\$7,000
9. Derricks Family, Missionary Support in Cameroon,
Africa, with Lutheran Bible Translators
\$5,500



Thank-you Linda Koeller!



The LWML Executive Board thanks Linda Koeller for her many years of service to our District. She has served at Good Shepherd Lutheran Church in Appleton as Society President, Secretary and Christian Life Chair. She served as Zone 18 President and Christian Life Chairman.

She served on the North Wisconsin District Executive Board as Assistant to the Christian Life Chairman and Mission Grants Director. She co-chaired the 2012 District LWML Convention in Appleton and continues to serve the LWML at the national level. Her husband, Rev. Martin Koeller served as Pastoral Counselor for the North Wisconsin District LWML. He will be retiring in June and they will be moving to the St. Louis area to be closer to their grandchildren. God bless the Koellers as they prepare to relocate. You will be missed.

2019 LWML Mission Trip to Bethesda and Trinity Lutheran Church in Milwaukee, Wisconsin

August 1-3, 2019

**Watch for more information in the
Winter Mission Tidings**

Or contact Mary Scharenbrock 715-826-0160

maryscharenbrock@gmail.com



National Mite Offerings Received as of August 31, 2018
Mission Goal for 2017–2019 Biennium: \$2,075,000.00

Amount Received: \$ 1,297,082.86

Total Mites Still Needed: \$ 777,917.14

Remembering Carol



Our sister in Christ, Carol M. Barton, has gone to be home with her Lord. You may remember her from our retreats, her LWML activities, or her work with her husband with LCEF. In recent years she wrote two books, her life story titled "Remembering" and then her latest book, "GO!" which was an accounting of her life and her family's six years as missionaries in New Guinea. "May Carol rest in peace, and may we all take comfort in the resurrection of our Lord Jesus Christ."



Get Energized!



NWI DISTRICT PRESIDENT
BECKY HALTAUFDERHEID
ALGOMA, WI

Bring energy and joy to your LWML events. Have your society or zone adopt one of the National or North Wisconsin Mission Grants. Keep the recipients and their mission workers in your daily prayers. Many Mission Grants were selected in Albuquerque in 2017 and just recently at the NWD LWML Convention.

By focusing on missions and missionaries in this manner, it will bring a sense of purpose to you and your members as you continue to support missions with your mite box offerings. Sometimes we hear, "There isn't anything I can do." By adopting a Mission Grant, you grow closer to the people God has chosen as His own. You support those in need with every penny, nickel, dime or quarter you place into your mite box. As you place your gifts into that mite box, say a prayer that God would multiply your gifts as they reach their recipient. You will feel energized by doing so.



Perhaps you are looking for ways to energize your society. Program Helps on the national LWML website is a great resource that can help energize your meetings and bring thoughtful learning and growing as you study God's Word. Each month features a different topic with everything you need. It includes opening and closing devotions, Bible study suggestions, a mission project for your community and a sketch for each topic. The topic that is near and dear to my heart was in August 2018 titled, "Hear, Learn, Grow." It allowed me to reminisce on my school days and my favorite teacher. As you read the topic, I'm sure most of you, too, will remember a teacher that was your favorite. Mine was my mother. I never had her as a teacher in school, but my sister did. Mom taught us about the love of Jesus every day by the way she lived her life.

Mom was an amazing teacher who had difficulty walking due to cerebral palsy, but that didn't stop her from teaching kids about the love of Jesus. I remember her telling us about her one room school in East Detroit, Michigan, and how the older students helped her to maintain the school and keep it warm in winter. Check out the Program Helps at lwml.org for a fresh, fun avenue to learn about God's great gifts and help your LWML group get energized and grow in the Word of the Lord.

At your Fall Rally, your zone will be asked to submit a banner design to represent NWD at the 38th Biennial Convention in Mobile, Alabama. You will be selecting a delegate to represent your zone at the convention. If you have never attended a national convention, please prayerfully consider attending and representing your zone as a delegate. It is such a blessing to be surrounded by so many sisters wearing purple. You will be energized by the speakers, the Bible studies presented by Donna Pyle, the worship service and working with your sisters at servant events. Following the convention, join other LWML sisters and their families on a five-day cruise on Carnival Cruise Lines traveling to Costa Maya and Cozumel from Mobile. For more information, go to lwml.org/2019-convention. The Executive Board approved a nine-day bus trip to Mobile. Read the article for more information.



October is LWML month. Perhaps you have celebrated LWML Sunday already or are looking forward to doing so. Our Society at St. John's in



Algoma celebrated LWML Sunday with the order of service and materials provided on the LWML website. The congregation helped us collect Gifts of the Heart for East Shore Industries, a local business that works with the

handicapped. LWML members served as ushers and readers and shared with the congregation what LWML is all about at the society, district and national levels. We want our congregation to know what LWML is all about and encourage younger congregational members to become involved. It's always so fulfilling to know that we are helping others by our mites. We don't have to travel to other countries or be a missionary in order to help others know about the love of Jesus. By our mites and prayers, they will know that others care.

In November Pastor Doug Reinders, Lisa Glessing, Sue Neider and I will be traveling to St. Louis for the Assembly of Leaders Training. We will be gathering with many other men and



Leadership Development

women from districts across the United States under the theme, "Follow the Leader." It is based on Philippians 4:9 *"Whatever you have learned or received or heard from*

me, or seen in me – put into practice. And the God of peace will be with you." This is the first year Pastoral Counselors are invited to attend. We are excited to be attending this training and are committed to bringing the leadership information back to the district and sharing it with you. Please keep us in your prayers as we prepare for this training.

The National LWML office has moved to the campus of Concordia Seminary, St. Louis:

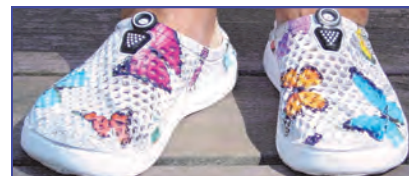
LWML

801 Seminary Place, Ste. L010

St. Louis, MO 53105

This move came as a result of a conversation between President Patti Ross and Dr. Dale Meyer as they rode on the Lutheran Hour Ministries float. President Ross asked Dr. Meyer how the LWML could have more of a presence at the seminary. Dr. Meyer suggested she move the LWML office to the seminary campus. What better way to meet with seminary students than to sit with them in various locations around the seminary and tell them what the LWML is all about. *(Concordia Publishing House will continue to fulfill LWML orders.)*

It's the season of fall, my favorite time of the year. I love breathing in the crisp air and taking a walk in the fallen leaves. The changing colors inspire me to thank God for His beautiful artistry. You too may be ready for fall. Take time to walk and talk with Jesus. I know you will be energized!



You are a blessing!

Becky Haltaufderheid

Q4T = Quilts for Texas

The ladies of Our Redeemer LWML made quilts for the disaster area in Rochland, Texas, that was hit by the brunt of Hurricane Harvey. The quilts were dedicated at our monthly meeting in November 2017.

A special Love Offering was taken at the Christmas party and \$600 was sent to Mayaguez, Puerto Rico, (former congregation of Rev. Matt Ruesch) for disaster relief following the hurricane in November. *Serve the Lord with Gladness!*

Right: Nancy Wilhelmi, Caren Erickson, Joan Luthinen, Maridel Bey, Sue Patton, Gloria Sjoquist, Barb Carlson.

CAREN ERICKSON, PRESIDENT
OUR REDEEMER LUTHERAN CHURCH
KINGSFORD, MI
ZONE 2



Hats and Crowns

Do you remember when hats were in style? Beautiful, wide-brimmed hats, flower trimmed hats, veil attached hats and even the Jackie Kennedy pillbox hat. There was a time when you weren't dressed for church or Ladies Aid without one. Hats are gorgeous, classy and sometimes just plain funny. But sometimes our hats aren't really hats at all, but titles or roles we fill for our many jobs. So how many hats do you wear? Can you just imagine how many hats you could balance on your head at one time?



CHRISTIAN LIFE
SUE PFEIL
WINTER, WI

will be given to us. When we slow down and focus on Him, He will give us the strength to keep going to wear all those daily hats.



For us at the convention, we experienced what it might be like when we get to heaven with everyone wearing a crown. What an impressive sea of gold!

Mission Trip to Detroit

A couple of weeks after our convention, 13 of us were on the NWD mission trip to Detroit. One day we spent at East Bethlehem Lutheran Church in the inner city for their VBS. That day, 50 children from a homeless shelter were there and we helped with everything from the opening to lunch; lessons and crafts to just plain fun. If you can believe this, they normally have up to 100 kids. The theme for their 5-week VBS was heroes in the Bible. Although we didn't have enough crowns for all the children, the director was thrilled to receive the ones we had left from our convention as they were going to talk about Jesus, our King the next day.



This was from the opening to the skit all the Christian Life zone chairs presented at NWD Convention in June. There were lots of laughs as we related to some of the characters in the skit and all the different hats they wore, from an accountant to a chef and baker. After each character told us about her hat, our 3 precocious "granddaughters"

wearing their Ladies Aid hats made from lampshades, added a hat to our stoic hat rack until the hats finally fell off.

The skit ended with a Dr. Seuss story about "The 500 Hats of Bartholomew Cubbins," where the king orders Bartholomew, a peasant to remove his hat, but every time he did, another hat would appear until the 500th one is a beautiful crown.

The crown reminds us of God's promise for our crown of life. If we stay faithful to Him and do as He asks of us by seeking first His kingdom and righteousness, all of these things

To God be the Glory!

Sue Pfeil

Christian Life Committee

Christian Sisters and Brothers are a Blessing



PASTORAL
COUNSELOR
REV. DOUG REINDERS
FREMONT, WI

It was a pleasure to be with many of you for the board meeting and the Fall Retreat in early September at Camp Luther. I enjoyed the fellowship and getting to know you. I wish more women would participate in the LWML and experience the joy of fellowshiping with other like-minded Christian women.

We need the encouragement of other Christians. There are many things in life that test our faith in the Lord. It's a blessing that we can turn to our sisters and brothers in Christ for support and comfort in our time of need. It's reassuring to know that we aren't alone.

The apostle Paul sought the fellowship of other Christians. Life certainly wasn't easy for him. He had been robbed and shipwrecked numerous times. He experienced imprisonment and beatings, and was exposed to the elements and hunger. It brought him a peace of mind to be in the midst of Christians

who would encourage him in his ministry. Being in the presence of fellow Christians revived his spirit. He received the encouragement to go on. *"There we found some brothers who invited us to spend a week with them. And so we came to Rome. The brothers there had heard that we were coming, and they traveled as far as the Forum of Appius and the Three Taverns to meet us. At the sight of these men Paul thanked God and was encouraged"* Acts 28:14-15.

I'm sure there are times when we feel all alone. No one seems to care about us. But that isn't true. Our Lord Jesus cares about us. The proof is in the fact that He has brought Christian women together in the LWML, women who are united in their love for Jesus and care for each other.

I hope we appreciate the blessing that our fellow Christian sisters and brothers truly are. They give us much needed encouragement.

Rev. Douglas Reinders
LWML Counselor

Zone 5 Spring Rally

Rock of Ages Lutheran Church, Minocqua, welcomed 63 ladies to Zone 5 LWML Spring Rally on Thursday, April 19. It was a wonderful get together as Lutheran Women in Mission celebrated 76 years. Our speaker was Gary (Woody) Vought, executive director of Camp Luther at Three Lakes. He gave a great presentation about the kids that go to camp every year, learning spiritual growth and leadership skills. Ladies from 7 different area Lutheran churches enjoyed a skit, singing, laughter, and fellowship. Thank you to Pastor Phil Beukema for your devotions, and all of the Rock of Ages Ladies Guild members who helped prepare for the day.

KAREN WALBRUCK
ROCK OF AGES LUTHERAN CHURCH
MINOCQUA, WI





Lutheran Women's Missionary League 38th Biennial Convention

Dates: Thursday, June 20, 2019 through
Sunday, June 23, 2019

Location: Mobile, Alabama

Theme: *"In Praise to the LORD!"*

Scripture Verse: *"Sing to the Lord, all the earth! Tell of his salvation from day to day. Declare his glory among the nations." (1 Chronicles 16:23–24a)*

Convention Goal Statement: Led by God's power, we praise and proclaim the Lord among all the nations.

Convention Objectives - Each convention attendee will:

- *Sing and rejoice in celebration of His Word.*
- *Tell of His salvation for all.*
- *Declare His glory among the nations.*
- *Go forth in His joy!*

Convention Logo Explanation

To declare His glory among the nations is the heart of who we are as Lutheran Women in Mission. Guided by the Holy Spirit and God's marvelous works, we will be equipped in 2019 at Mobile, Alabama, to tell of His salvation from day to day. The **Cross** and the **Heart** mark the work of **Christ Jesus to all the Earth** and lead us **In Praise to the Lord**.

Join us for fun and fellowship as we travel by bus to the LWML 36th Convention

June 20-23, 2019

The wheels on the LWML bus
go round and round
all the way to
Mobile, Alabama town!



We will leave aboard the Lamers Bus Lines Motorcoach from points in our North Wisconsin District on Monday, June 17, and return Tuesday, June 25. This allows us to make some stops coming and going, maybe the new LWML office at Concordia Seminary in St. Louis, The Rosa Young Museum in Selma, Ala., the Ark Encounter and the Creation Museum in northern Kentucky, tours around Mobile, and an overnight in Nashville. This will firm up as we get closer to our departure. All this on top of the fun we have just riding the bus. LWMLers are fun people to travel with and you don't have to be a woman to come with us. Men are welcome.

The cost is \$500 for the bus to and from Mobile, 4 nights in motels (with breakfast?), and the shuttle bus to and from the convention each day, based on 35 people per bus. If we have more people register we can maybe have money for meals also. Registration for the convention and motels at Mobile are separate.

The convention committee needs approximate numbers traveling by bus for motel assignments by January 1. **Please register by December 1st with a \$100 deposit.** Make checks out to **NWI District - LWML** and send to:

Sue Neider, Meeting Manager (715-889-6992)

Email: hsneider1971@gmail.com,

Mailing address: 2687 Trump Lake Road, Wabeno, WI 54566

I am interested in riding the Lamers Motorcoach to the LWML Convention in
Mobile, Alabama, June 17-25, 2019

Name _____

Address _____

Phone # _____ Email _____

Pick up points and additional stops will be made available as determined by location of participants. Deposits are transferable but not refundable. Looking forward to being with you!

SIGN UP TODAY!



LWML Fall Retreat

69th Annual Fall Retreat at Camp Luther

What a WONDERFUL retreat with 106 registered. The retreat began with a worship service led by Pastor Wessel.

Our guest speaker and Bible study leader was Kaye Wolff, Vice-President of Special Focus Ministries. What a blessing she was. Her



Bible study was titled "In praise to the Lord" based on the theme "I will praise you, Lord my God, with all my heart; I will glorify your name forever" Psalm 86:12. Pastor

Wessel led us in our Bible study "Prayer of David" based on Psalm 86 in which David expresses his distress and overcomes that distress through praise and worship.

We had many attend the early morning Bible study, "The Power in Praise," led by Pam Pfankuch on Friday.



Linda Koeller led the study on Saturday titled, "Seeking to Serve as Spontaneous, 'Salt'-y Sisters Shining for our Savior!"

Our entertainment was led by Heather Ruesch accompanied by her guitarist, Jim. She has an amazing voice and inspired us to praise



the Lord with her as we sang familiar hymns. Her husband, Pastor Matthew Ruesch of Our Redeemer

Lutheran Church in Kingsford, Michigan, spoke about his mission ministry in Puerto Rico before hurricane Maria and after. Pastor Ruesch relayed that displaced Puerto Ricans looking for employment, have relocated to the Kingsford area after hurricane Maria. The Lord certainly works in mysterious ways.



A special thank you to Laura Prodel who led the praise team with beautiful hymns sung in the retreat center and around the campfire. Thank you to the praise team who did a fantastic job: Laura Prodel, Sue Neider, Linda Koeller, Judy Pelot, Rhonda Laatsch, Elizabeth McDowell, Barb Teetzen, Amanda Samuelson, and Judy Raddant.

Thank you to Kim Zastrow for providing manicures. Kim worked on those who had never received a manicure in our previous retreats.



Thank you to Pam Pfankuch for helping Kim provide manicures.

Shelly "Indigo"

Karolus, Director of Donor Relations at Camp Luther, judged our LWML "Apron Contest" and the winner was Sharon Makela. Sharon had friends sign her LWML apron and sewed pretty purple flowers on her apron. Thank you to all who participated in the apron contest.



Thank you for all who brought Gifts from the Heart for Hope Lodge in Marshfield. We had nearly 22 boxes and bags of donated items for the cancer patients. A special thank you to



Coral Paul and Terry Grube who delivered the donated items. You are a blessing!

Twenty-five fleece blankets that were tied for Ministry St. Joseph Hospital to be used by the children in the pediatric ward and the adults in the Palliative Care Unit. Thank you to all who



donated fleece material. A special thank you to Sue Grotjahn for leading this servant event and a special thank you to Pam Pfankuch for delivering them. You are much appreciated!



Karen Samuelson led the servant event of making greeting cards for the patients and staff at Ministry St. Joseph Hospital and Hope Lodge.

There were 91 cards made. Thank you Karen for sharing your talent and to all who helped!



Amy Tousey led the craft of decorating a hand bag. Many beautiful designs were made by those who participated.



A special thank you to Becky Haltaufderheid, Betsy Lane and Clara Pask for an awesome job of taking pictures. Thank you to Sharon Nieman for an exceptional job in the LWML Store.

I would like to thank each and every one of you for all your help and work you did at the retreats over the past four years.

You are truly a blessing. Thank you for allowing me to serve you as 2nd Vice President. I will certainly miss all the planning and organizing of this awesome event!

Serving the Lord with Gladness!

In Christ,

Mary Scharenbrock

LWML 2nd Vice President.



Above: Linda Tryczak, Registration.
Mary Scharenbrock and Pam Pfankuch



Camp Luther kitchen staff again provided us with delicious meals and service.



Free time activities included wagon rides, shuffle board, water activities or just enjoying the outdoors and our LWML sisters at Camp Luther.



69th Annual LWML Fall Retreat Camp Luther, Three Lakes, Wis. September 6-8, 2018

Our zone pictures were taken in front of the original lodge and dining building. These will be demolished before the 2019 Fall Retreat

to make room for the new community center and dining facility.



Zones 1-4 and 5-6 were taken on the steps of the original lodge. Below are Zones 7-11 and Zones 15-19 on the following page that were taken in front of the current dining room building.





Zones 12-14 were taken at the courtyard level in front of the dining hall/lodge buildings.

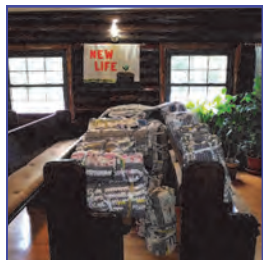


Sleeping Mats for OGT

LINDA PELOT, PRESIDENT
OUR SAVIOR LUTHERAN CHURCH
(BUNDY) GLEASON, WI
ZONE 5

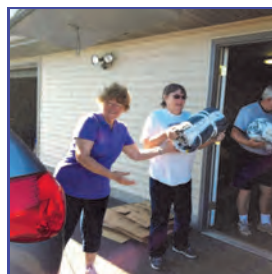
The ladies of Our Savior Lutheran Church, (Bundy) Gleason, have been busy all year collecting, cutting and rolling plastic bags into "plarn" (plastic yarn) to be crocheted into sleeping mats for Orphan Grain Train (OGT). In our worship service on June 10, Pastor Al Montgomery included the blessing of sleeping mats and

on June 11, Linda Pelot, Bea Montgomery and Debbie Verbist delivered them to the distribution center in Wausau. Thanks to one "super crocheter" we were able to deliver 30 mats. We also delivered 7 thick mats shared from another zone. While there, we learned of all the many items collected for OGT and were able to visit with the ladies and gentlemen as they worked sorting, boxing and labeling the many items. May God continue to bless the many hands that help Orphan Grain Train in their ministry to the world. And remember, **no matter how small**



your group of ladies is, you can still make a big difference in the world ...

Bea Montgomery handing mats to Debby Verbist (both of Our Savior) and then to Wayne Flanagan.



Wayne Flanagan does public relations for the Wisconsin Branch OGT.

Hygiene Kits for OGT

MARILYN MUELLER
TRINITY LUTHERAN
CHURCH
MEDFORD, WI
ZONE 10

During the month of June, ladies at Trinity Lutheran Church in Medford held an ingathering for items for Orphan Grain Train Hygiene Kits. A total of 73 kits were completed and shipped.



Statement of Ownership Management and Circulation

Title of Publication: Mission Tidings
Publication Number 362-230
Filing date: October 1, 2018
Issue Frequency: Quarterly
Number of issues published annually: 4
Annual subscription price: \$0
Complete mailing address:
Mission Tidings, c/o Betsy Lane
Box 95, White Lake, WI 54491

Location of Headquarters of General Business Of:
North Wisconsin District LWML Mission Tidings
Betsy Lane
Box 95
White Lake, WI 54491
Publisher: Mission Tidings, c/o Betsy Lane
Box 95, White Lake, WI 54491
Issue dates for circulation data: 10/2017 – 07/2018

<i>Extent and nature of circulation</i>	<i>Average</i>	<i>Single Issue (7/18)</i>
a. Total number of copies	1,259	1,274
b. Paid outside county	1,224	1,274
Paid inside county	35	0
Paid outside the mails	0	0
Paid other classes of mail	0	0
c. Total paid distribution	1,259	1,274
d. Free distribution outside county	0	0
Free distribution inside county	0	0
Free mailed at other classes	0	0
Free distributed outside the mail	0	0
e. Free distribution <i>outside mail</i>	0	0
f. Total distribution	1,259	1,274
g. Copies not distributed	0	0
h. Total	1,259	1,274
i. Percent paid	100%	100%

Betsy Lane, Editor 9/24/2018

Serving the Lord With Gladness

Executive Committee (Elected Officers)

District President	Rebecca Haltaufderheid	920-255-0280	becky.halttaufderheid@gmail.com
Mission Grants Director	Lynne Johnson	715-366-4642	lafa@uniontel.net
Recording Secretary	Sherrilee Wallerman	715-344-0031	swallerman@charter.net
1st Vice President	Diane Simon	920-720-8771	disimon33@yahoo.com
2nd Vice President	Sharon Hanke	715-842-1986	srhanke60@gmail.com
Corresponding Secretary	Georgette Vandenburg	715-476-2110	mrsvan1941@yahoo.com
Financial Secretary	Pam Pfankuch	715-723-7124	ppfankuch53@gmail.com
Treasurer	Jody Cook	715-325-5595	djcook@wctc.net
Junior Pastoral Counselor	Rev. Douglas Reinders	920-667-4301	pastordoug@milwpc.com
Senior Pastoral Counselor	Pastor Jonathan Wessel	715-533-9662	gracerev@plbb.us

Executive Board (Appointed Officers)

Archivist/Historian	Cindy Braatz	715-842-7320	cindy.braatz@agcountry.com
Christian Life Chair Assistants	Dawn Via Sue Pfeil Sharon Makela	715-641-2071 715-266-2187 715-635-9263	dbscorpio76@gmail.com mumzie1950@yahoo.com sharonmakela@yahoo.com
Heart to Heart Chair Assistants	Sarah Long-Radloff Jeanne Wilman Sue Grotjahn Nicole Sengkhamee	920-734-5289 715-790-1369 715-896-2730 920-600-1060	lsradloff@milwpc.com jjwilman@amerytel.net psydkick2@gmail.com yognicole@gmail.com
Human Care Chairman Assistants	Sandy Michaelis Deb Trewyn Terri Fink	715-355-6849 715-820-3443 715-457-2903	sandikay3@frontier.com dtrewyn@msn.com Terri61243@gmail.com
Leader Development Co-chairs	Deb Grothman Mary Scharenbrock	920-621-8168 715-826-0160	deb.grothman@att.net maryscharenbrock@gmail.com
Meeting Manager	Sue Neider	715-889-6992	hsneider1971@gmail.com
Mission Tidings	Betsy Lane, Editor Teresa Pockat, Circulation Mgr.	715-882-3274 715-851-2323	vlane@antigopro.net revwifet@yahoo.com
Parliamentarian	Yvonne Schilsky	715-573-0123	yvondschil@frontier.com
Public Relations Director	Sharon Niemann	715-352-2087	elsharon3515@gmail.com
Structure Chairman Assistant	Jackie Strassburg Allison Hein	715-551-8613 906-337-1487	j_strassburg@hotmail.com amhein@mtu.edu
Web Administrator	Karol Selle	715-303-9259	selleks@gmail.com
YWR Co-Chairs Assistant	Lisa Glessing Denise Fall Shannon Schwartz	715-520-7273 715-206-0825 920-312-6584	glessinglm@gmail.com dfall16@gmail.com shannonschwartznurse@gmail.com
Short Term Mission Co-Chairs	Lynne Johnson Penny Selle	715-366-4642 920-987-5454	lafa@uniontel.net selle@athenet.net

Mission Tidings
North Wisconsin District LWML
Teresa Pockat, Circulation Manager
112 E. Freeborn St.
Cecil, WI 54111

Lutheran Women in Mission

Calendar Items

December 1, 2018

Deadline for winter issue of
Mission Tidings

January 19, 2019

Christian Life Workshop
Wausau, WI

February 18-19, 2019

EC and BOD mtgs.
St. Mark's Church
Wausau, WI

March 1, 2019

Deadline for winter issue of
Mission Tidings

April 6, 2019

YWR Retreat at Camp Luther
Three Lakes, WI

May 20-21, 2019

EC and BOD mtgs.
Rib Mountain Church
Wausau, WI

June 20-23, 2019

LWML 38th Biennial Convention
Mobile, Alabama
Theme: "In Praise
to the Lord"



Check Us Out



NOTE: When corresponding via email, please remember to include "LWML" in the subject line along with a brief indication of the subject.

NOTE:

- *Lutheran Woman's Quarterly* subscription information (no money) is sent to the **District Corresponding Secretary**.
- North Wis. District *Mission Tidings* subscription information (no money) is sent to the **District Circulation Manager**.
- Remittance Forms and **ALL MONIES** are sent to the **District Financial Secretary**, checks must be made out to **NWI District - LWML** and clearly marked as to purpose. When sending any correspondence or money, **PLEASE** include **Society Name**, **Church Name**, and **Zone Number**. (Names of district officers are found on page 15 of this publication.)